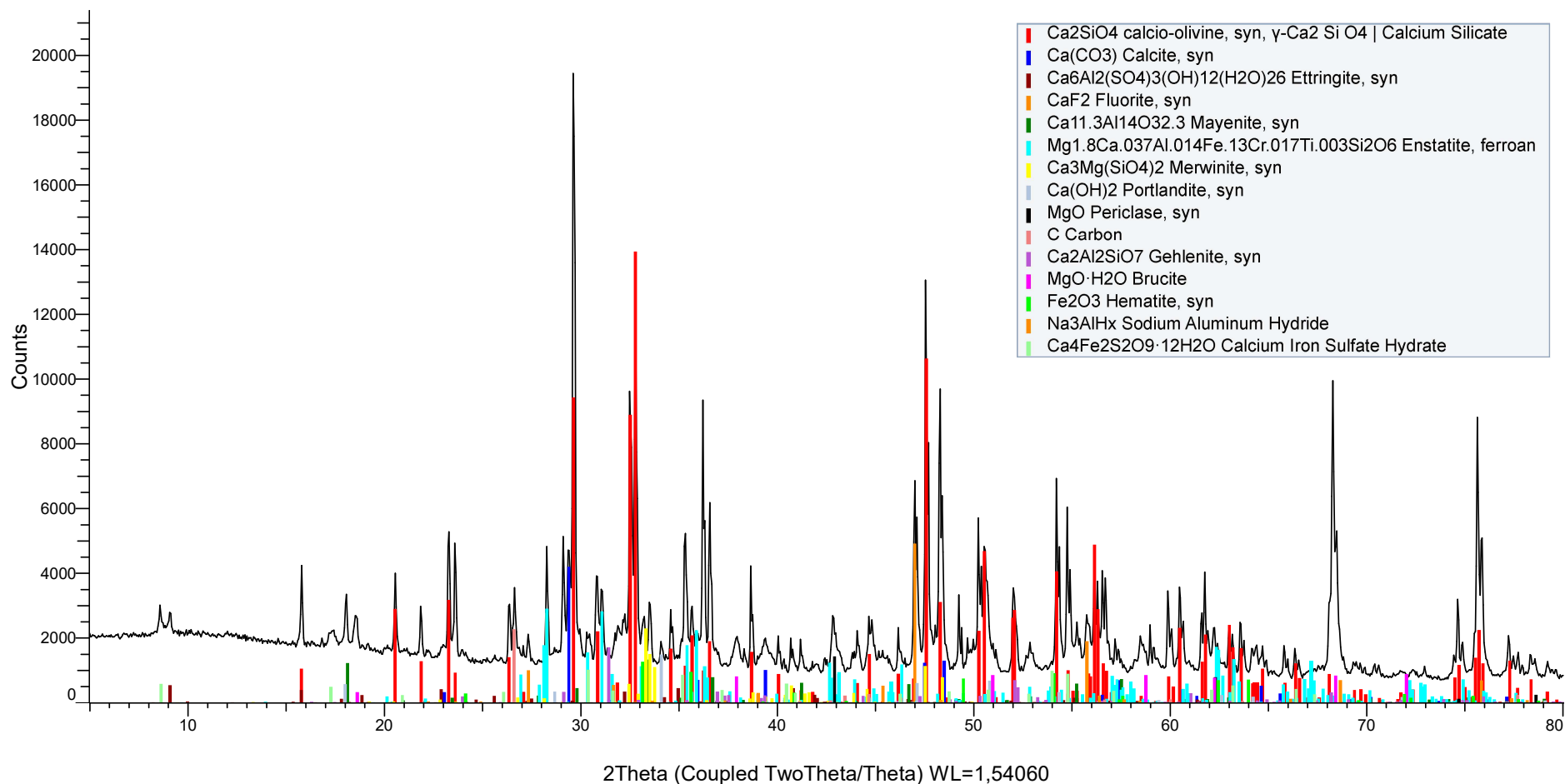


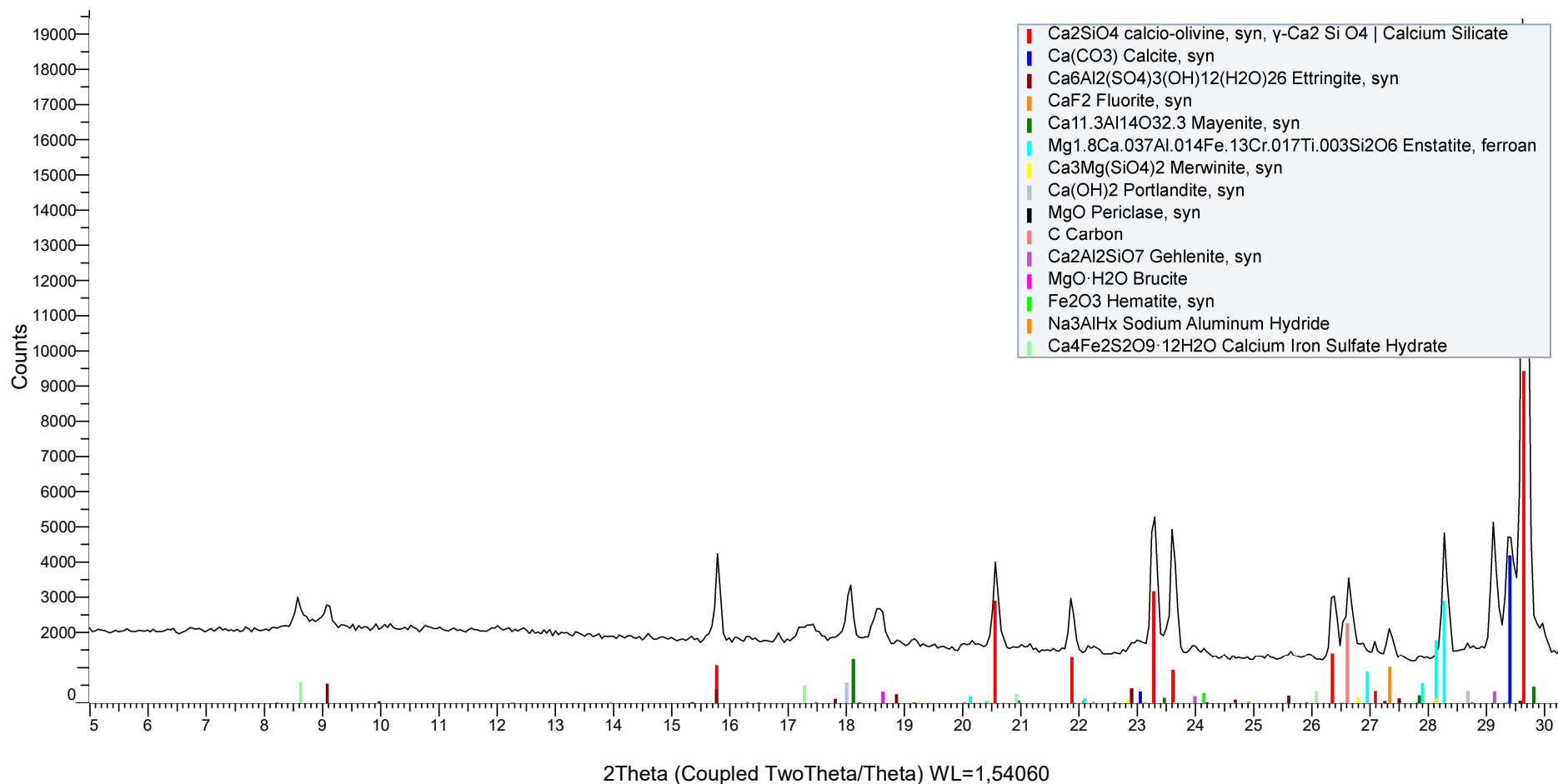


LFS-Hormor (Coupled TwoTheta/Theta)



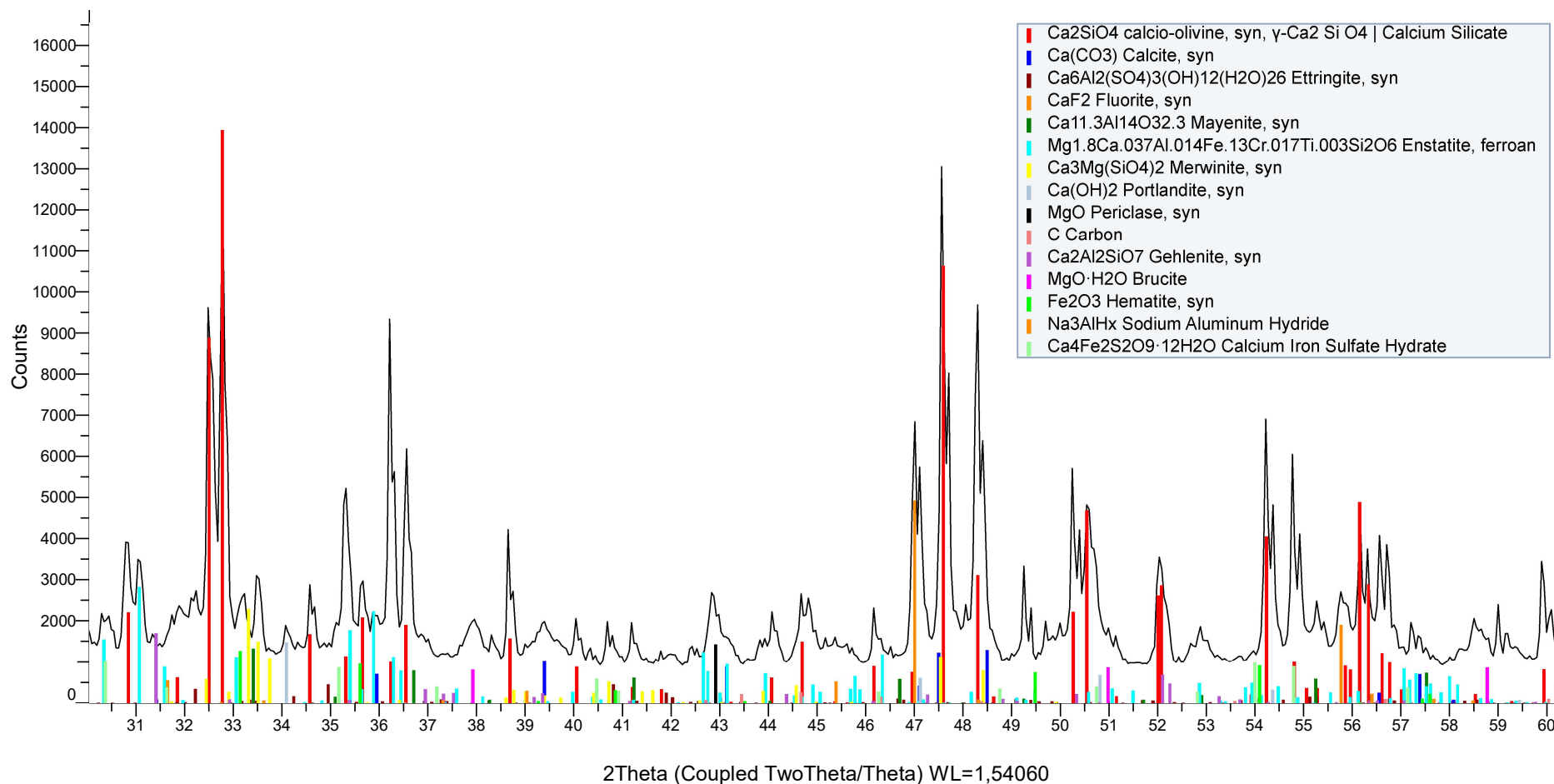


LFS-Hormor (Coupled TwoTheta/Theta)



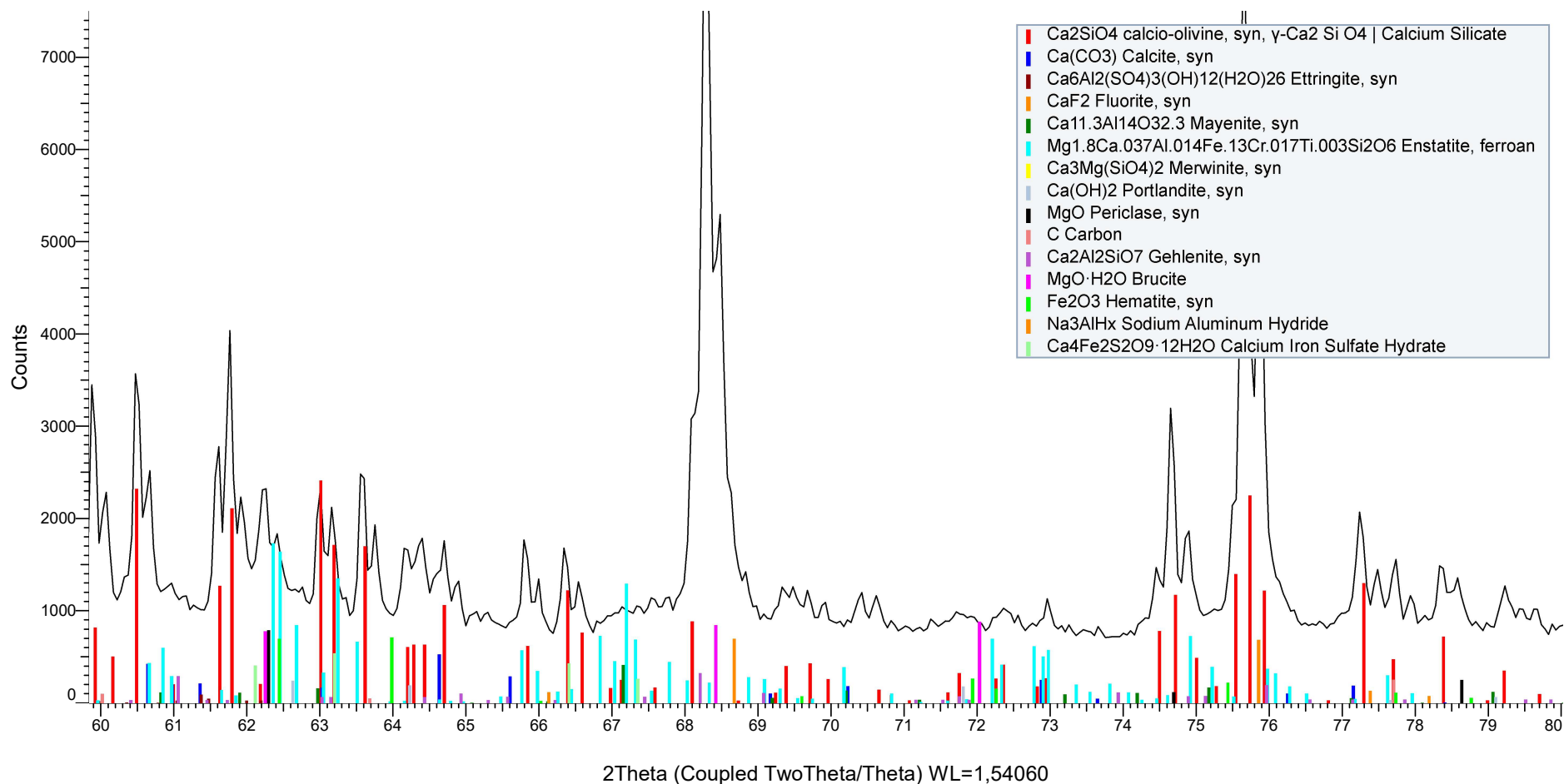


LFS-Hormor (Coupled TwoTheta/Theta)





LFS-Hormor (Coupled TwoTheta/Theta)



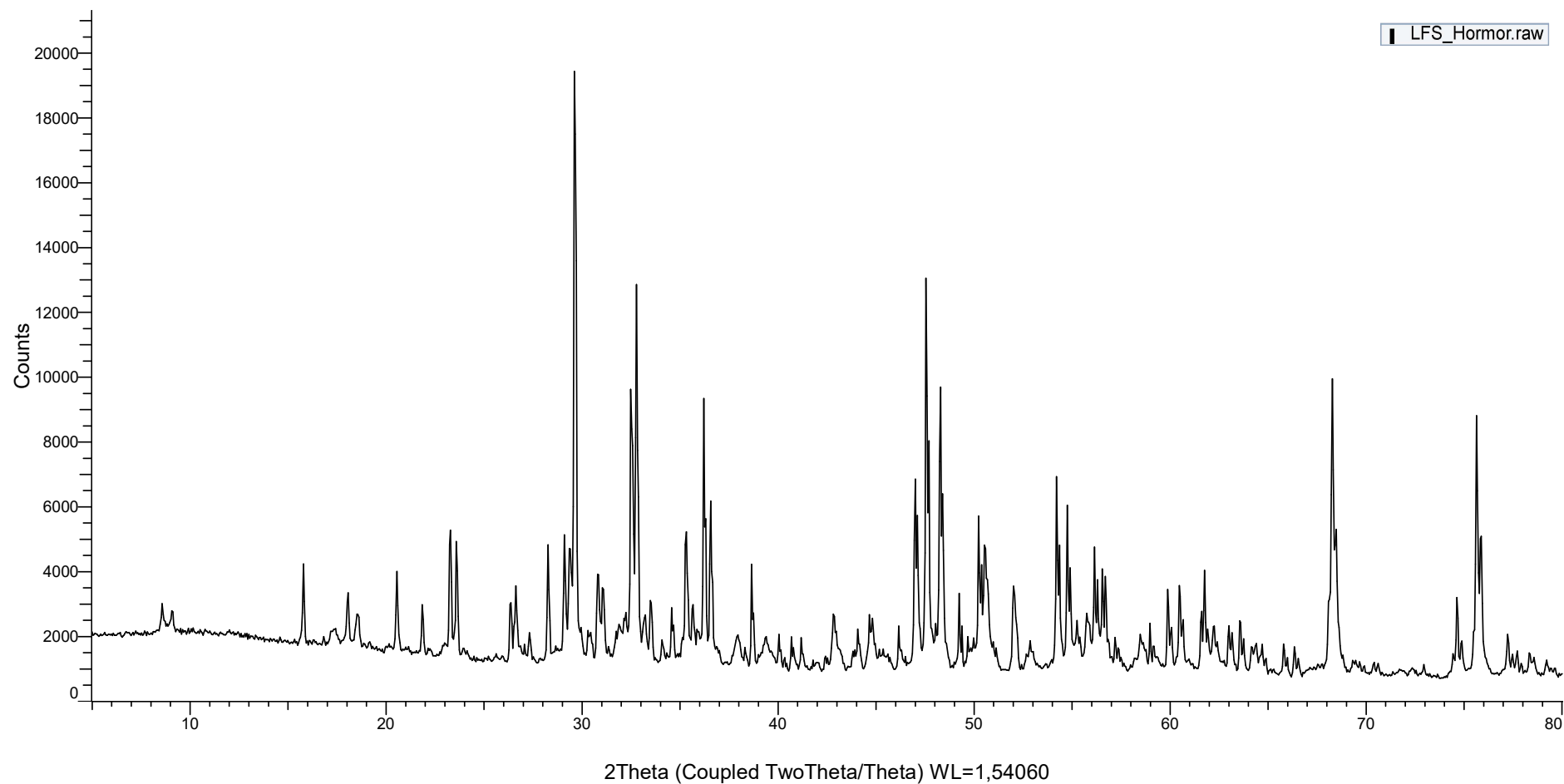


UNIVERSIDAD
DE BURGOS

Vicerrectorado de Investigación,
Transferencia e Innovación



LFS-Hormor (Coupled TwoTheta/Theta)





Peak List #1
















Index	Angle	d Value	Net Intensity	Gross Intensity	Rel. Intensity	h,k,l
1	8,584 °	10,29271 Å	856	2976	4,9 %	n.a.
2	9,077 °	9,73442 Å	656	2784	3,8 %	n.a.
3	15,791 °	5,60772 Å	2350	4160	13,5 %	n.a.
4	17,348 °	5,10753 Å	457	2217	2,6 %	n.a.
5	18,061 °	4,90766 Å	1551	3270	8,9 %	n.a.
6	18,566 °	4,77524 Å	1001	2682	5,8 %	n.a.
7	19,159 °	4,62872 Å	195	1823	1,1 %	n.a.
8	20,563 °	4,31582 Å	2399	3938	13,8 %	n.a.
9	21,862 °	4,06223 Å	1414	2892	8,1 %	n.a.
10	23,266 °	3,82017 Å	4576	5970	26,3 %	n.a.
11	23,590 °	3,76842 Å	1486	2859	8,6 %	n.a.
12	24,101 °	3,68964 Å	146	1479	0,8 %	n.a.
13	26,407 °	3,37250 Å	1382	2644	8,0 %	n.a.
14	26,629 °	3,34479 Å	2226	3484	12,8 %	n.a.
15	27,331 °	3,26054 Å	836	2070	4,8 %	n.a.
16	28,271 °	3,15416 Å	3395	4656	19,5 %	n.a.
17	29,124 °	3,06376 Å	4295	5611	24,7 %	n.a.
18	29,398 °	3,03580 Å	3372	4702	19,4 %	n.a.
19	29,626 °	3,01293 Å	17370	18709	100,0 %	n.a.
20	30,370 °	2,94080 Å	565	1925	3,3 %	n.a.
21	30,950 °	2,88699 Å	1099	2465	6,3 %	n.a.
22	31,915 °	2,80186 Å	985	2340	5,7 %	n.a.
23	32,464 °	2,75575 Å	5020	6357	28,9 %	n.a.
24	32,788 °	2,72923 Å	11438	12761	65,9 %	n.a.
25	33,236 °	2,69342 Å	1364	2662	7,9 %	n.a.
26	33,507 °	2,67230 Å	1791	3071	10,3 %	n.a.
27	34,110 °	2,62645 Å	546	1803	3,1 %	n.a.
28	34,618 °	2,58904 Å	1057	2319	6,1 %	n.a.
29	35,304 °	2,54028 Å	5062	6320	29,1 %	n.a.
30	35,678 °	2,51451 Å	1648	2897	9,5 %	n.a.
31	36,297 °	2,47300 Å	4291	5519	24,7 %	n.a.
32	37,947 °	2,36923 Å	870	2029	5,0 %	n.a.
33	38,660 °	2,32715 Å	2922	4058	16,8 %	n.a.
34	39,393 °	2,28553 Å	885	1982	5,1 %	n.a.
35	40,022 °	2,25101 Å	703	1755	4,0 %	n.a.
36	40,727 °	2,21368 Å	573	1581	3,3 %	n.a.
37	41,224 °	2,18810 Å	608	1617	3,5 %	n.a.
38	42,014 °	2,14877 Å	195	1190	1,1 %	n.a.
39	42,869 °	2,10787 Å	1621	2624	9,3 %	n.a.
40	44,096 °	2,05203 Å	992	2018	5,7 %	n.a.
41	44,676 °	2,02672 Å	1565	2599	9,0 %	n.a.
42	44,806 °	2,02117 Å	1411	2446	8,1 %	n.a.
43	45,362 °	1,99767 Å	562	1594	3,2 %	n.a.
44	46,308 °	1,95902 Å	534	1573	3,1 %	n.a.
45	47,002 °	1,93171 Å	5606	6679	32,3 %	n.a.
46	47,069 °	1,92911 Å	2311	3386	13,3 %	n.a.
47	47,563 °	1,91022 Å	11236	12325	64,7 %	n.a.
48	47,693 °	1,90534 Å	1849	2941	10,6 %	n.a.
49	48,291 °	1,88313 Å	8208	9305	47,3 %	n.a.



50	48,390 °	1,87948 Å	5090	6187	29,3 %	n.a.
51	49,263 °	1,84822 Å	1741	2832	10,0 %	n.a.
52	49,323 °	1,84611 Å	641	1732	3,7 %	n.a.
53	50,210 °	1,81555 Å	2767	3836	15,9 %	n.a.
54	50,385 °	1,80967 Å	3094	4156	17,8 %	n.a.
55	50,558 °	1,80388 Å	3716	4769	21,4 %	n.a.
56	52,038 °	1,75601 Å	2486	3489	14,3 %	n.a.
57	52,879 °	1,73003 Å	789	1822	4,5 %	n.a.
58	54,198 °	1,69099 Å	3054	4121	17,6 %	n.a.
59	54,359 °	1,68637 Å	3602	4672	20,7 %	n.a.
60	54,766 °	1,67480 Å	4765	5841	27,4 %	n.a.
61	54,921 °	1,67043 Å	3315	4392	19,1 %	n.a.
62	55,295 °	1,66002 Å	1810	2886	10,4 %	n.a.
63	55,769 °	1,64704 Å	1573	2643	9,1 %	n.a.
64	56,152 °	1,63669 Å	3656	4717	21,0 %	n.a.
65	56,309 °	1,63250 Å	2529	3585	14,6 %	n.a.
66	56,566 °	1,62569 Å	2726	3772	15,7 %	n.a.
67	56,716 °	1,62176 Å	2596	3636	14,9 %	n.a.
68	57,262 °	1,60757 Å	592	1602	3,4 %	n.a.
69	58,685 °	1,57194 Å	633	1651	3,6 %	n.a.
70	58,984 °	1,56468 Å	728	1759	4,2 %	n.a.
71	59,148 °	1,56074 Å	658	1695	3,8 %	n.a.
72	59,922 °	1,54241 Å	1954	3008	11,2 %	n.a.
73	60,081 °	1,53872 Å	1217	2273	7,0 %	n.a.
74	60,495 °	1,52916 Å	2398	3455	13,8 %	n.a.
75	60,704 °	1,52440 Å	1610	2665	9,3 %	n.a.
76	61,768 °	1,50068 Å	2909	3955	16,7 %	n.a.
77	62,375 °	1,48752 Å	665	1707	3,8 %	n.a.
78	63,020 °	1,47385 Å	1217	2242	7,0 %	n.a.
79	63,602 °	1,46175 Å	1435	2437	8,3 %	n.a.
80	64,381 °	1,44594 Å	785	1739	4,5 %	n.a.
81	65,834 °	1,41750 Å	780	1619	4,5 %	n.a.
82	66,371 °	1,40732 Å	729	1563	4,2 %	n.a.
83	68,286 °	1,37244 Å	8874	9774	51,1 %	n.a.
84	69,443 °	1,35238 Å	291	1180	1,7 %	n.a.
85	70,407 °	1,33622 Å	321	1173	1,8 %	n.a.
86	71,755 °	1,31438 Å	157	966	0,9 %	n.a.
87	72,375 °	1,30464 Å	216	1016	1,2 %	n.a.
88	72,954 °	1,29571 Å	337	1118	1,9 %	n.a.
89	74,655 °	1,27035 Å	2291	3086	13,2 %	n.a.
90	75,739 °	1,25484 Å	3181	4023	18,3 %	n.a.
91	77,476 °	1,23098 Å	563	1431	3,2 %	n.a.
92	77,714 °	1,22781 Å	634	1503	3,7 %	n.a.
93	78,374 °	1,21911 Å	594	1457	3,4 %	n.a.
94	79,351 °	1,20654 Å	125	967	0,7 %	n.a.



Pattern List #1

Show	Color	Pattern #	Compound Name	Formula	Concentration Level
Yes		PDF 01-070-2450	calcio-olivine, syn, γ -Ca ₂ Si O ₄ Calcium Silicate	Ca ₂ SiO ₄	Major
Yes		PDF 01-071-3699	Calcite, syn	Ca(CO ₃)	Minor
Yes		PDF 01-075-7554	Ettringite, syn	Ca ₆ Al ₂ (SO ₄) ₃ (OH) ₁₂ (H ₂ O) ₂₆	Trace
Yes		PDF 00-035-0816	Fluorite, syn	CaF ₂	Major
Yes		PDF 01-078-0910	Mayenite, syn	Ca _{11.3} Al ₁₄ O _{32.3}	Minor
Yes		PDF 01-088-2377	Enstatite, ferroan	Mg _{1.8} Ca _{.037} Al _{.014} Fe _{.13} Cr _{.017} Ti _{.003} Si ₂ O ₆	Major
Yes		PDF 00-035-0591	Merwinite, syn	Ca ₃ Mg(SiO ₄) ₂	Major
Yes		PDF 00-044-1481	Portlandite, syn	Ca(OH) ₂	Minor
Yes		PDF 00-045-0946	Periclase, syn	MgO	Minor
Yes		PDF 00-026-1076	Carbon	C	Major
Yes		PDF 00-035-0755	Gehlenite, syn	Ca ₂ Al ₂ SiO ₇	Minor
Yes		PDF 00-002-1092	Brucite	MgO·H ₂ O	Minor
Yes		PDF 00-033-0664	Hematite, syn	Fe ₂ O ₃	Minor
Yes		PDF 00-052-0878	Sodium Aluminum Hydride	Na ₃ AlH _x	Minor
Yes		PDF 00-044-0601	Calcium Iron Sulfate Hydrate	Ca ₄ Fe ₂ S ₂ O ₉ ·12H ₂ O	Minor